

## Figures



Figure 3.1  
Budgewoi and Lakes Beach  
Coastal Hazard Planning Lines and Hazard Zones



0 50 100 150 200 Metres

### Legend

- |  |                                     |
|--|-------------------------------------|
| — Immediate Coastal Hazard Planning Line | — Combined Bluff, Beach & Dune Zone |
| — 2050 Coastal Hazard Planning Line      | — Geotechnical Hazard Zone          |
| — 2100 Coastal Hazard Planning Line      | — A SMEC Area of advice             |
|  | — B SCE Area of advice              |





Figure 3.2  
Hargraves Beach  
Coastal Hazard Planning Lines and Hazard Zones



0 50 100 150 200 Metres

### Legend

- |  |                                     |
|--|-------------------------------------|
| — Immediate Coastal Hazard Planning Line | — Combined Bluff, Beach & Dune Zone |
| — 2050 Coastal Hazard Planning Line      | — Geotechnical Hazard Zone          |
| — 2100 Coastal Hazard Planning Line      | — A SMEC Area of advice             |
|  | — B SCE Area of advice              |





Figure 3.3  
Jenny Dixon Beach  
Coastal Hazard Planning Lines and Hazard Zones



0 50 100 150 200 Metres

### Legend

- |  |                                     |
|--|-------------------------------------|
| — Immediate Coastal Hazard Planning Line | — Combined Bluff, Beach & Dune Zone |
| — 2050 Coastal Hazard Planning Line      | — Geotechnical Hazard Zone          |
| — 2100 Coastal Hazard Planning Line      | — A SMEC Area of advice             |
|  | — B SCE Area of advice              |





Figure 3.4  
Cabbage Tree Harbour, Lighthouse & Pebbly Beach  
Coastal Hazard Planning Lines and Hazard Zones



0 50 100 150 200 Metres

### Legend

- |  |                                     |
|--|-------------------------------------|
| — Immediate Coastal Hazard Planning Line | — Combined Bluff, Beach & Dune Zone |
| — 2050 Coastal Hazard Planning Line      | — Geotechnical Hazard Zone          |
| — 2100 Coastal Hazard Planning Line      | — A SMEC Area of advice             |
|  | — B SCE Area of advice              |





Figure 3.5  
Soldiers & Pelican Beach  
Coastal Hazard Planning Lines and Hazard Zones



Metres  
0 50 100 150 200

### Legend

- |  |                                     |
|--|-------------------------------------|
| — Immediate Coastal Hazard Planning Line | — Combined Bluff, Beach & Dune Zone |
| — 2050 Coastal Hazard Planning Line      | — Geotechnical Hazard Zone          |
| — 2100 Coastal Hazard Planning Line      | — A SMEC Area of advice             |
|  | — B SCE Area of advice              |



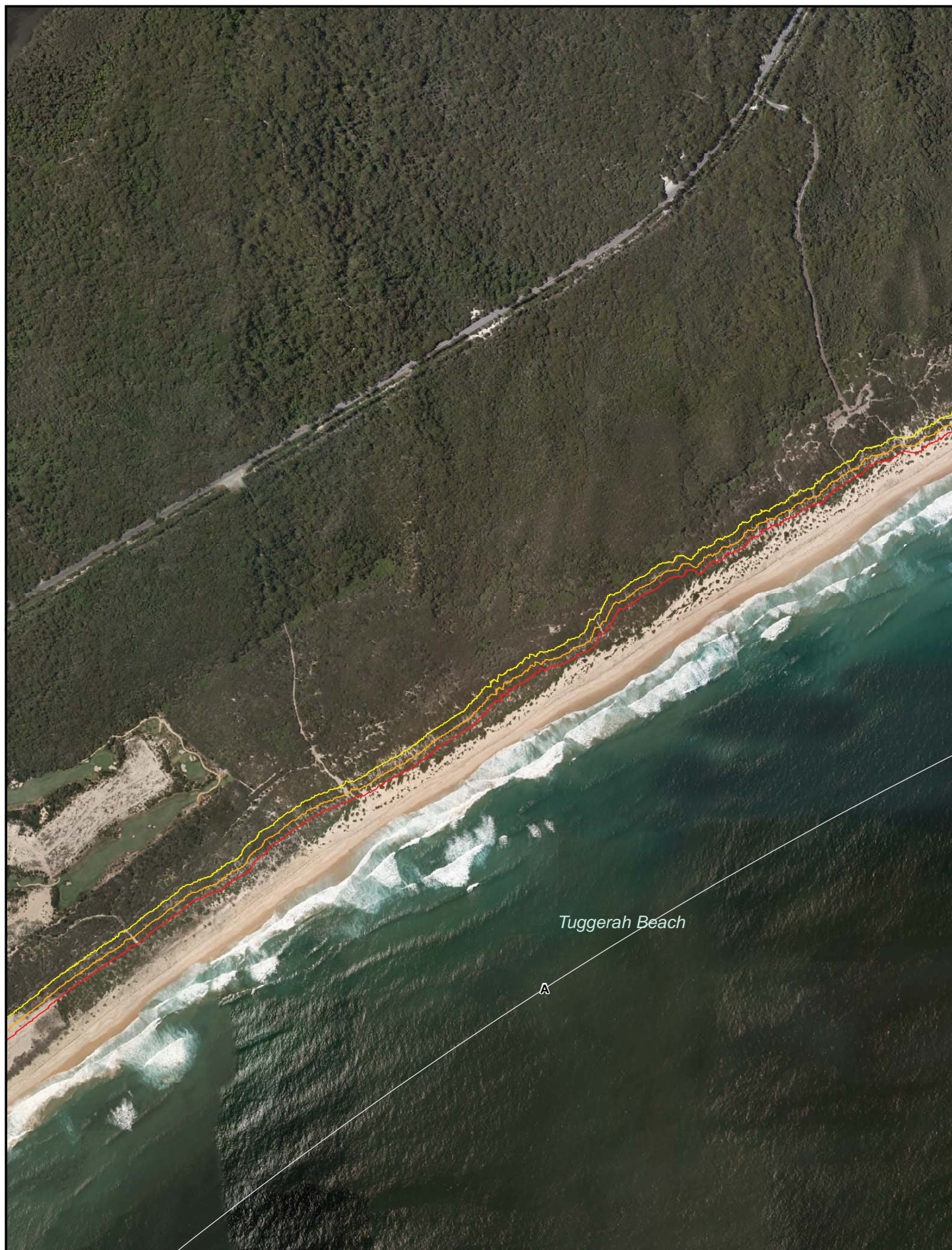


Figure 3.6  
Tuggerah Beach  
Coastal Hazard Planning Lines and Hazard Zones



Metres  
0 50 100 150 200

### Legend

- |  |                                     |
|--|-------------------------------------|
| — Immediate Coastal Hazard Planning Line | — Combined Bluff, Beach & Dune Zone |
| — 2050 Coastal Hazard Planning Line      | — Geotechnical Hazard Zone          |
| — 2100 Coastal Hazard Planning Line      | — A SMEC Area of advice             |
|  | — B SCE Area of advice              |



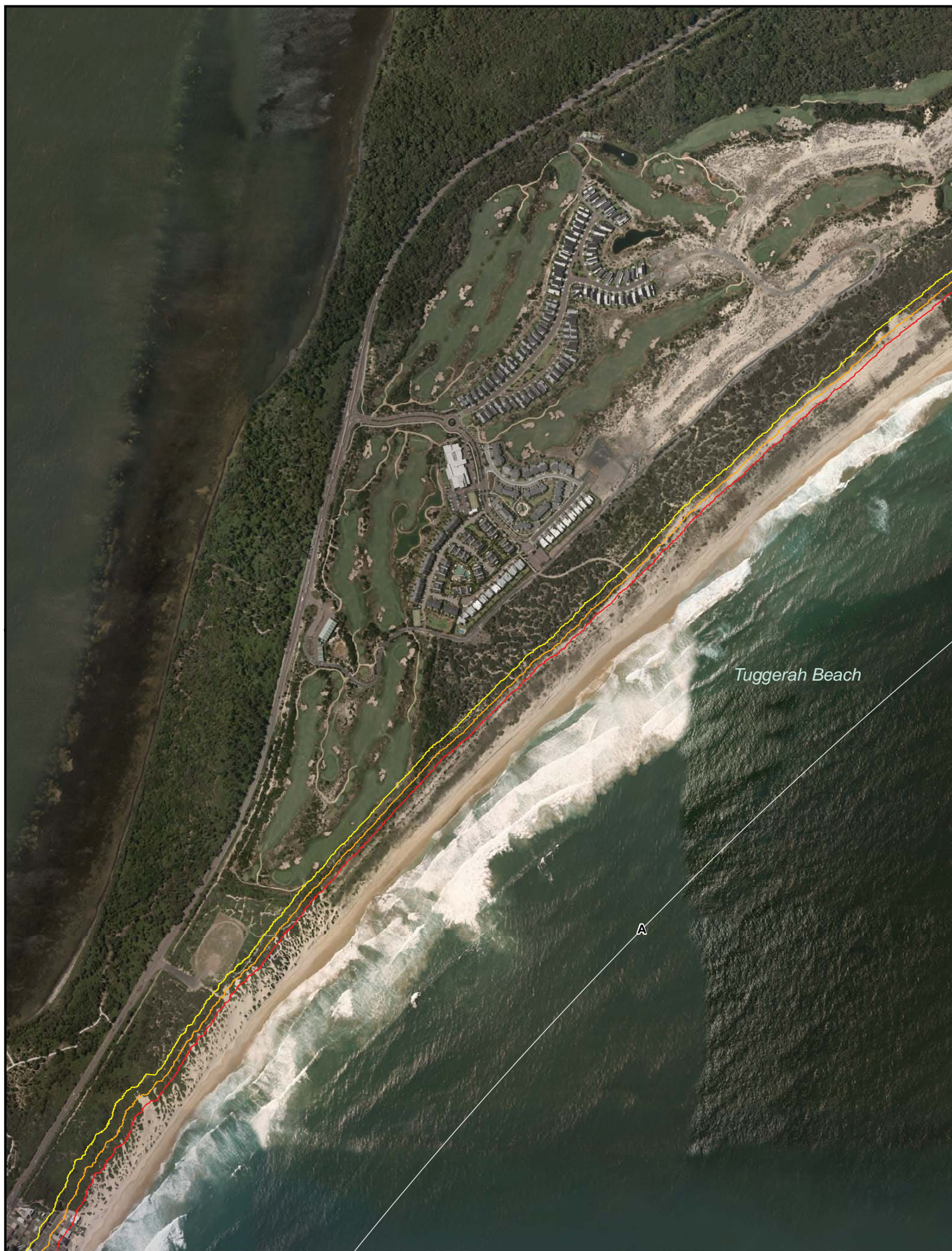


Figure 3.7  
Tuggerah Beach  
Coastal Hazard Planning Lines and Hazard Zones



Metres  
0 50 100 150 200

### Legend

- |  |                                     |
|--|-------------------------------------|
| — Immediate Coastal Hazard Planning Line | — Combined Bluff. Beach & Dune Zone |
| — 2050 Coastal Hazard Planning Line      | — Geotechnical Hazard Zone          |
| — 2100 Coastal Hazard Planning Line      | — A SMEC Area of advice             |
|  | — B SCE Area of advice              |





Figure 3.8  
North Entrance Beach  
Coastal Hazard Planning Lines and Hazard Zones



Metres  
0 50 100 150 200

### Legend

- Immediate Coastal Hazard Planning Line
- 2050 Coastal Hazard Planning Line
- 2100 Coastal Hazard Planning Line
- Combined Bluff, Beach & Dune Zone
- Geotechnical Hazard Zone
- A SMEC Area of advice
- B SCE Area of advice





Figure 3.9  
The Entrance Channel  
Coastal Hazard Planning Lines and Hazard Zones



0 50 100 150 200 Metres

### Legend

- |  |                                     |
|--|-------------------------------------|
| — Immediate Coastal Hazard Planning Line | — Combined Bluff. Beach & Dune Zone |
| — 2050 Coastal Hazard Planning Line      | — Geotechnical Hazard Zone          |
| — 2100 Coastal Hazard Planning Line      | — A SMEC Area of advice             |
|  | — B SCE Area of advice              |





Figure 3.10  
Blue Bay, Toowoona Bay & Little Bay  
Coastal Hazard Planning Lines and Hazard Zones



0 50 100 150 200 Metres

### Legend

- Immediate Coastal Hazard Planning Line
- 2050 Coastal Hazard Planning Line
- 2100 Coastal Hazard Planning Line
- Combined Bluff, Beach & Dune Zone
- Geotechnical Hazard Zone
- A SMEC Area of advice
- B SCE Area of advice





Figure 3.11  
Shelly Beach & Blue Lagoon  
Coastal Hazard Planning Lines and Hazard Zones



Metres  
0 50 100 150 200

### Legend

- |  |                                     |
|--|-------------------------------------|
| — Immediate Coastal Hazard Planning Line | — Combined Bluff, Beach & Dune Zone |
| — 2050 Coastal Hazard Planning Line      | — Geotechnical Hazard Zone          |
| — 2100 Coastal Hazard Planning Line      | — A SMEC Area of advice             |
|  | — B SCE Area of advice              |





Figure 3.12  
Bateau Bay Beach & Crackneck Point  
Coastal Hazard Planning Lines and Hazard Zones



0 50 100 150 200 Metres

### Legend

- |  |                                     |
|--|-------------------------------------|
| — Immediate Coastal Hazard Planning Line | — Combined Bluff, Beach & Dune Zone |
| — 2050 Coastal Hazard Planning Line      | — Geotechnical Hazard Zone          |
| — 2100 Coastal Hazard Planning Line      | — A SMEC Area of advice             |
|  | — B SCE Area of advice              |



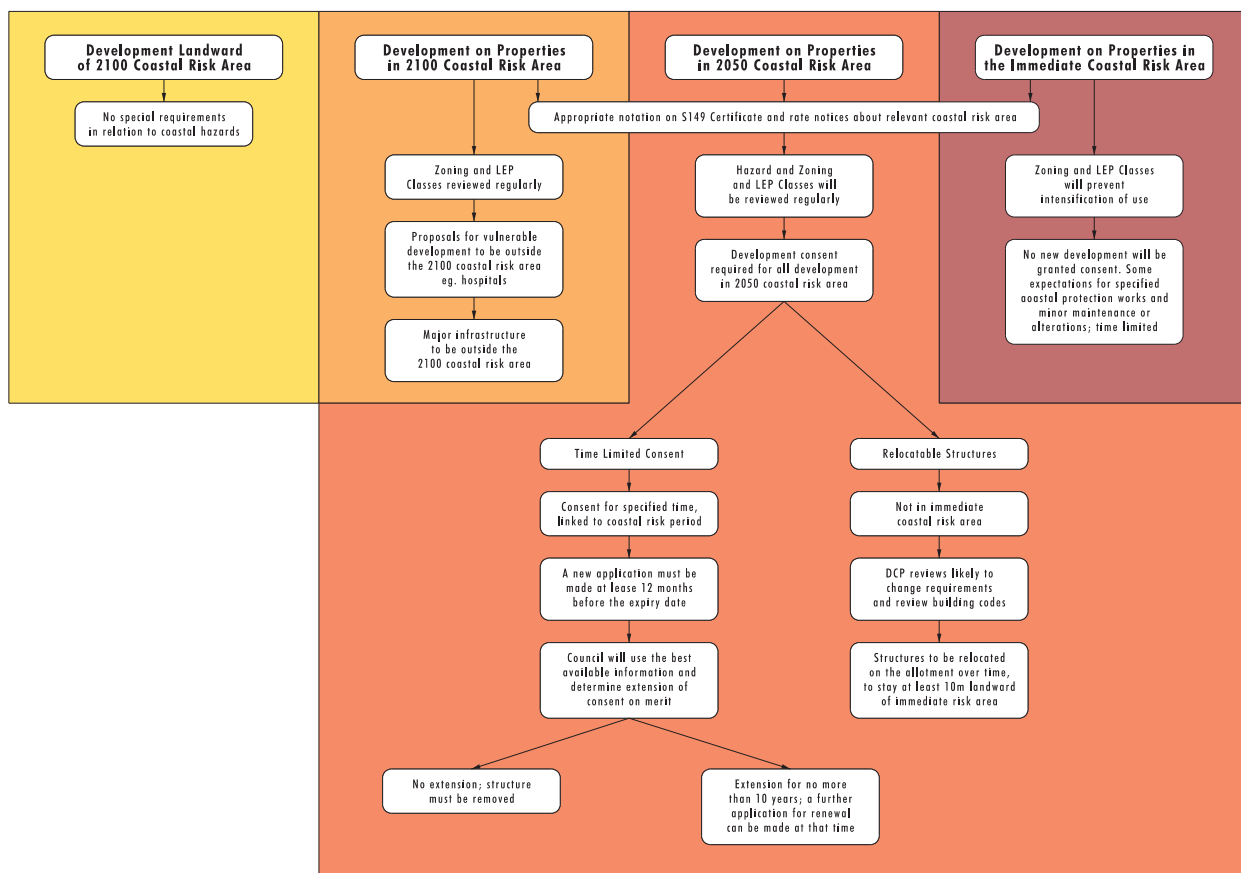


FIGURE 3.13  
Consent Processes  
for Coastal Risk Areas